

## Simple steps to save money and go green!

You turn off the lights at night or when you leave a room to save on electricity costs and preserve the life of the bulb. Why limit that to the overhead lights? Apply the same procedures to your IT assets including PCs, monitors and laptops. Proactively establish and deploy energy-efficient policies across your network extending the life of your assets, reducing your carbon footprint and lowering your monthly energy bill!

### Numara<sup>®</sup> FootPrints<sup>®</sup> Power Manager Benefits

- ❖ Recognize cost savings quickly while easily deploying power management policies
- ❖ Understand IT asset power usage patterns and track for savings associated with power management policies
- ❖ At-a-glance dashboard and reports to show power consumption by group or device type
- ❖ Enforce power management standards and policies from a central console
- ❖ Support green IT initiatives while extending the life of your IT assets

### Save money and prove it!

Pressure from shareholders and internal personnel to "be green" is playing an increasing role, spurring the adoption of green policies to improve public relations, conserve resources and demonstrate environmental responsibility. At the end of the day, it is also about fiscal responsibility and the return on investment.

Analysts have listed green IT as a top strategic initiative in recent years. In addition, reports suggest that workstations account for roughly 90 percent of an organizations power draw and that reducing PC uptime by half can provide significant savings over the course of a single year. But power management is not just an issue of turning computers off. It is about leveraging the extensive power management features available on today's computers and standardizing on policies that meet organization needs while supporting productivity.

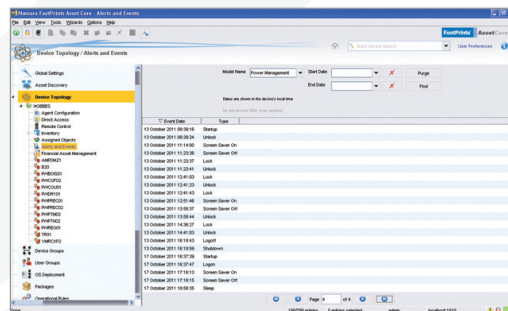
### Configure and deploy policies

FootPrints Power Manager makes it easy to configure and deploy detailed power management policies tailored to your organization's specific needs. Wizards help to define power schemes, power groups and associate members; and a graphical interface displays devices based on specific power settings. FootPrints Power Manager also allows you to:

- ❖ Schedule and activate standby and hibernation modes across computers by time zones
- ❖ Apply various power management actions when a laptop's lid is closed
- ❖ Define low and critical battery actions
- ❖ Determine and control wake capabilities so that other applications can start computers for maintenance functions after hours

### FootPrints family

- FP Incident&ProblemManager
- FP ChangeManager
- FP ConfigurationManager
- FP ServiceCatalogManager
- FP InventoryManager
- FP RemoteManager
- FP DeploymentManager
- FP PatchManager
- FP DeviceManager
- FP VulnerabilityManager
- FP ComplianceManager
- FP PowerManager
- FP MigrationManager

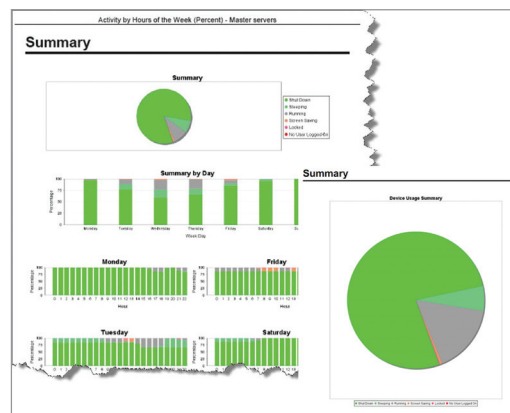


## Features

- ❖ **Power actions** – define periods of idleness for PCs and apply various power management actions; require a password for reactivation
- ❖ **Component control** – control settings that reduce power to individual components after a period of unused time, for example, turning off monitors, hard drives, PCI and USB devices
- ❖ **Dynamic grouping** – easily group computers to apply specific power settings using a variety of criteria such as site, department, desktop or laptop
- ❖ **Ready for productivity** – schedule auto-restart of computers so they are ready when users arrive at work
- ❖ **Wake-on-LAN** – determine and control wake capabilities so other applications can start computers for maintenance functions after-hours
- ❖ **Report now** – create, implement, and report on power management from one central console

Dynamic grouping capabilities in FootPrints Power Manager allow you to find and target devices for specific power management policies, without requiring access to the PC or even knowledge of its location. Dynamic groups automatically pass on computer attributes while the FootPrints Power Manager agent tracks and maintains all device attributes and their status on a regular basis. This means that FootPrints Power Manager evaluates and reports on all devices, even those only periodically connected to the network. As the administrator, you can quickly and easily adjust settings on a single PC or across groups of PCs from the central console without impacting user productivity.

Beyond the electric bill, demonstrate cost savings, greenhouse gas emission reductions and compliance with power policies with FootPrints Power Manager dynamic reporting. Constant monitoring and detailed reporting allow you to measure, adjust, and measure again so you can fine-tune power management policies to optimize energy consumption.



By continually measuring effective usage time against overall power and energy consumption, FootPrints Power Manager can provide detailed and summary reports precisely how you need to see them, whether for all devices, groups of devices, or individual devices.

## The freedom to simply...choose

FootPrints Power Manager is part of a fully integrated line of IT Operations Management solutions. The FootPrints family is a modular solution designed to simplify a diverse set of complex service management, asset management, and PC Lifecycle needs.

## Imagine...having the choice to:

- ❖ Decide which components or products are relevant to your business
- ❖ Manage various platforms from one console
- ❖ Invest in one point product, a solution set of multiple products, or the entire suite
- ❖ Buy what you need and not what the vendor dictates.

For more information on the minimum requirements necessary to use FootPrints Power Manager, please refer to our Technical Specifications document available online

## Who are we?

Founded in 1991, Numara<sup>®</sup> Software is a leading global provider of integrated IT Operations Management solutions. Numara's family of integrated products solve Endpoint Lifecycle Management, Mobile Device Management, Help Desk and Service Desk challenges for physical, virtual and mobile devices, simplifying and optimizing IT Operations Management.



freedom  
to simply choose  
the right solution for you